



RPAP2 Polyclonal Antibody

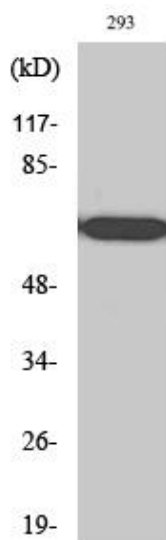
Catalog No	YP-Ab-01994
Isotype	IgG
Reactivity	Human;Rat;Mouse;
Applications	WB;ELISA
Gene Name	RPAP2
Protein Name	Putative RNA polymerase II subunit B1 CTD phosphatase RPAP2
Immunogen	The antiserum was produced against synthesized peptide derived from human RPAP2. AA range:460-509
Specificity	RPAP2 Polyclonal Antibody detects endogenous levels of RPAP2 protein.
Formulation	Liquid in PBS containing 50% glycerol, 0.5% BSA and 0.02% sodium azide.
Source	Polyclonal, Rabbit,IgG
Purification	The antibody was affinity-purified from rabbit antiserum by affinity-chromatography using epitope-specific immunogen.
Dilution	Western Blot: 1/500 - 1/2000. ELISA: 1/10000. Not yet tested in other applications.
Concentration	1 mg/ml
Purity	≥90%
Storage Stability	-20°C/1 year
Synonyms	RPAP2; C1orf82; Putative RNA polymerase II subunit B1 CTD phosphatase RPAP2; RNA polymerase II-associated protein 2
Observed Band	70kD
Cell Pathway	Cytoplasm . Nucleus . Shuttles between the cytoplasm and the nucleus in a CRM1-dependent manner.
Tissue Specificity	Brain,
Function	function:Forms an interface between the RNA polymerase II enzyme and chaperone/scaffolding protein, suggesting that it is required to connect RNA polymerase II to regulators of protein complex formation.,similarity:Belongs to the RPAP2 family.,subunit:Tightly associated with the RNA polymerase II complex.,
Background	function:Forms an interface between the RNA polymerase II enzyme and chaperone/scaffolding protein, suggesting that it is required to connect RNA polymerase II to regulators of protein complex formation.,similarity:Belongs to the RPAP2 family.,subunit:Tightly associated with the RNA polymerase II complex.,
matters needing attention	Avoid repeated freezing and thawing!



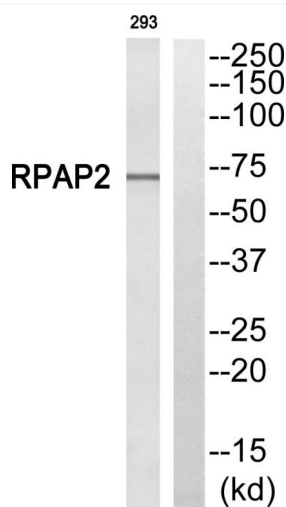
Usage suggestions

This product can be used in immunological reaction related experiments. For more information, please consult technical personnel.

Products Images



Western Blot analysis of various cells using RPAP2 Polyclonal Antibody



Western blot analysis of RPAP2 Antibody. The lane on the right is blocked with the RPAP2 peptide.